



LAVARA

CUSTOM ITALIAN WOODWORKING  
FOR RESIDENCES OF LASTING ELEGANCE

LUXURY LIVING  
MASTERFULLY CURATED



## LUXURY LIVING MASTERFULLY CURATED

LAVARA partners with established manufacturers and specialists from Italy, to offer bespoke custom woodworking for luxury residential interiors.

At LAVARA, we redefine luxury living for homeowners, curating masterfully bespoke woodworking solutions that transform residences into expressions of timeless elegance and unparalleled sophistication. We deliver personalized, one-of-a-kind interiors where every detail reflects uncompromising quality and refined taste.

Central to our vision is a selective alliance with Italy's most esteemed master craftsmen and leading manufacturers. These exclusive partnerships embody our rigorous commitment to exceptional craftsmanship, true bespoke artistry, and the meticulous standards our clients demand.

Our Italian collaborators specialize in fully customized woodworking, including seamless floor-to-ceiling boiserie, wall paneling, integrated storage systems, and architectural elements that elevate every space—lounges, dining rooms, family areas, home offices, bedrooms, walk-in closets, and more—into cohesive, harmonious statements. Decorative doors, bespoke detailing, and flawless integration ensure every piece becomes an extension of your home's architecture.

We also bring world-class excellence to the heart of the home with innovative, high-end kitchen solutions. Featuring modular systems with unique door configurations, exquisite finishes, and premium materials, these designs blend contemporary aesthetics with cutting-edge functionality for kitchens that are as practical as they are extraordinary.

At LAVARA, we serve as your dedicated guiding partner—meticulously selecting, coordinating, and overseeing these Italian virtuosos to bring your precise vision to life. Our team provides hands-on expertise throughout every project, combining centuries-old traditional techniques with advanced innovations (such as honeycomb construction for superior strength, lightness, reduced hardware wear, and effortless installation) and modular precision. The result: cohesive, enduring solutions crafted exclusively for your residence.

LAVARA and our distinguished Italian partners: A rare fusion of timeless tradition and uncompromising modernity—reserved for homes of true distinction. Let us craft the extraordinary for you.



Open Plan Kitchen and Dining Area:  
WOOD PANELS: ROVERE CARBON.  
MOKA  
with wine cabinet and shelving  
Highly Customizable  
FURNITURE:  
PINNACLE Rectangular Table  
PINNACLE Dining Chairs  
CARPET: Energy Bronze



State of the art woodworking factory in ITALY



## A VERSATILE PANELING SYSTEM:

At LAVARA, we proudly offer our exclusive **DRESS CODE** system—a revolutionary bespoke boiserie (wall paneling) framework designed to integrate storage, doors, and modular elements into comprehensive, luxurious interior solutions.

Available in sophisticated configurations such as total-height installations for seamless wall-to-ceiling coverage, floating designs that artfully balance solids and voids, and advanced modular integrations for enhanced flexibility, **DRESS CODE** fills a distinct market gap by masterfully combining precision-engineered, industrialized components with true custom carpentry.

This unique versatility enables endless creative adaptations, optimizing quality, efficiency, time, and cost while delivering one-of-a-kind environments tailored precisely to your vision.

## WHAT SETS US APART:

Through our partnerships with leading and established Italian manufacturers, LAVARA provides superior high-design functionality, limitless bespoke customization, and end-to-end project oversight—from initial concept to flawless installation. Unlike standard or generic paneling options, our solutions deliver exceptional longevity, deeper personalization, sustainable craftsmanship, and uncompromising innovation—making them the preferred choice for discerning clients seeking the finest in luxury interior furnishings.

## ELEVATING INTERIOR DESIGN:

**DRESS CODE** paneling transforms any space by adding architectural depth, warmth, and refined character—turning ordinary walls into artistic, functional statements that enhance spatial flow, lighting, acoustics, and overall ambiance. The result is an immersive, harmonious environment that bridges practicality with timeless elegance, perfectly reflecting sophisticated lifestyles and structural sophistication.

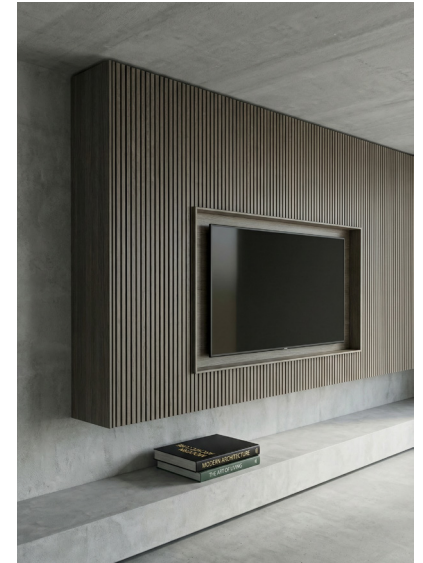
Total Height



TV Block & Niche



Floating



Bar Block



## STORAGE SOLUTIONS

CUBE 6 Integration



TV Block



Art Box



CUBE 6 + 1 Storage



Vapor Fireplace



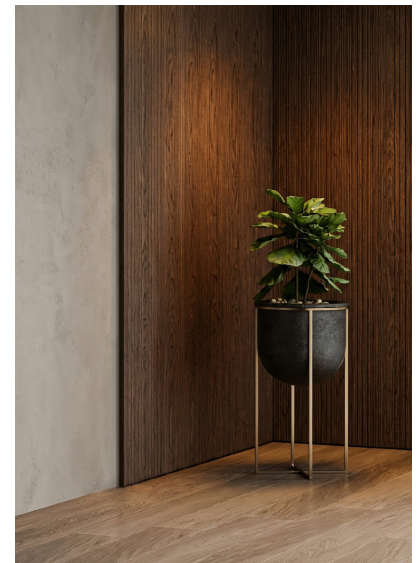
3D Fireplace



Hanging Tray H 12cm



Wall Fixing at 0,8 mm



## STORAGE SOLUTIONS

CUBE 6 + 2 Storage



6,8 cm distance from the wall

Shelf H 12 cm



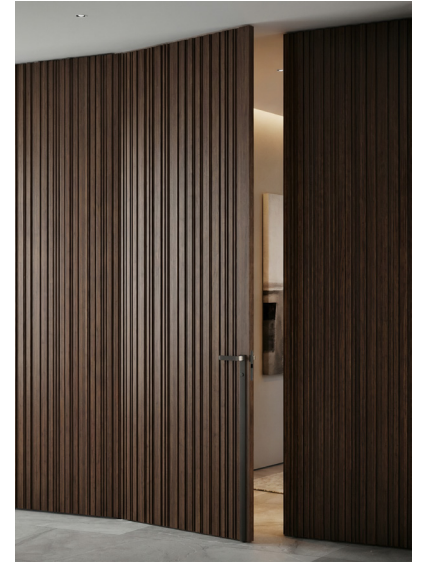
With storage d. 38 cm

With Storage d. 59.2 cm

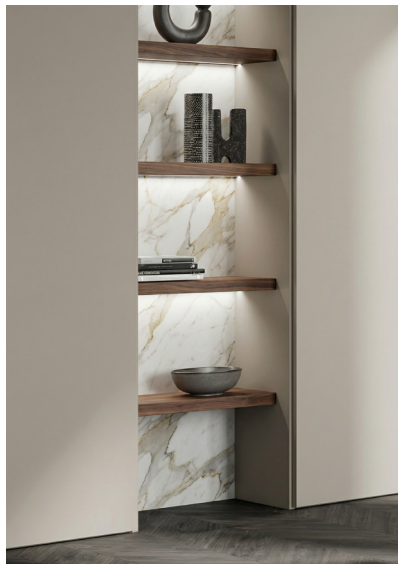


Folding Door

Swing Doors



Slim Module



## STORAGE SOLUTIONS

Sliding Doors



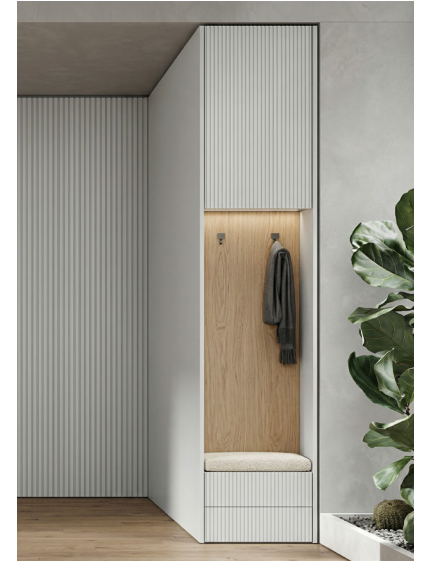
Pivot Doors



Mirror Terminal



Hanger Terminal



Bar Module



5 cm Thick Shelves



Open Terminal





## LIMITLESS SOLUTIONS

### PREMIUM MATERIALS: Bespoke Solutions

At LAVARA, we offer an exquisite selection of premium finishes and materials, carefully curated through our partnerships with leading Italian manufacturers to bring unparalleled sophistication to luxury residential interiors. Our bespoke proposals feature refined options such as carbonized oak in rich mocha tones for timeless warmth, lacquered surfaces in subtle mud hues with titanium accents for a contemporary edge, metallic bronze for luxurious sheen and depth, and textured gres stone grey for enduring elegance and tactile interest. These high-quality materials are masterfully combined—blending natural wood grains with metallic contrasts, unifying smooth lacquers with stone elements, or layering subtle textures—to create harmonious, visually compelling compositions tailored precisely to your vision and lifestyle.

### LAVARA Curating Italy's Finest Custom Woodworking for Florida's Luxury Residences

As a dedicated curator and provider of these exceptional woodworking solutions in Florida, LAVARA bridges the finest Italian craftsmanship with the discerning demands of the Sunshine State's luxury market. We deliver personalized, end-to-end service—from initial design consultation and material selection to expert installation—ensuring every project reflects uncompromising quality, functionality, and timeless refinement. Through close collaboration with our esteemed manufacturing partners, LAVARA empowers Florida homeowners, architects, and interior designers to realize bespoke environments that elevate everyday living into extraordinary expressions of elegance and mastery.



# INSPIRATION

## Warm Tones

Classic style, family atmosphere and warm tones are the main characteristics of this color palette.





Doors in 2:2 Canapa matt lacquer. TV box, Slim module, panels and door in Tobacco Oak. Cosmo Bar sideboard Cuoio glossy lacquered. Hector table in Tobacco Oak with Sand Ivory stoneware top.

LUXURY LIVING  
MASTERFULLY CURATED



Cosmo Bar sideboard Cuoio glossy lacquered.  
Hector table in Tobacco Oak with Sand Ivory  
stoneware top.

Open Space Dress Code with kitchen module and hidden appliances on terminal. Open Space module in Moka Oak 10:2; Slim module in matt Nocciola lacquer. Dress Code winery with bottle holder accessory. Furniture: PINNACLE Rectangular Dining Table, PINNACLE Dining Chair and NOMAD ESM Carpet.



LUXURY LIVING  
MASTERFULLY CURATED







LUXURY LIVING  
**MASTERFULLY CURATED**

Horizontal Cube 6 in Canapa matt lacquer.  
Vertical Cube 6 in Bronze metallic lacquer.

  
LAVARA



LAVARA

LAVARA redefines interior luxury with signature luxurious wall paneling solutions—expertly crafted, fully bespoke, and designed to transform any space into a masterpiece of elegance and sophistication.

Discover the unparalleled artistry of tailored wall panels, where Italian-inspired craftsmanship meets exclusive materials and meticulous attention to detail. From concept to flawless installation, our seamless, white-glove service ensures every element reflects your vision and elevates your environment with timeless opulence.





Vertical Cube 6 in Bronze metallic lacquer.



Cabinet Storage depth 59.2cm with 5cm thick shelves.

Dress Code Air in Antracite Lacquer 80:40  
with TV box and Slim module in Wengè oak.



## Dark Tones



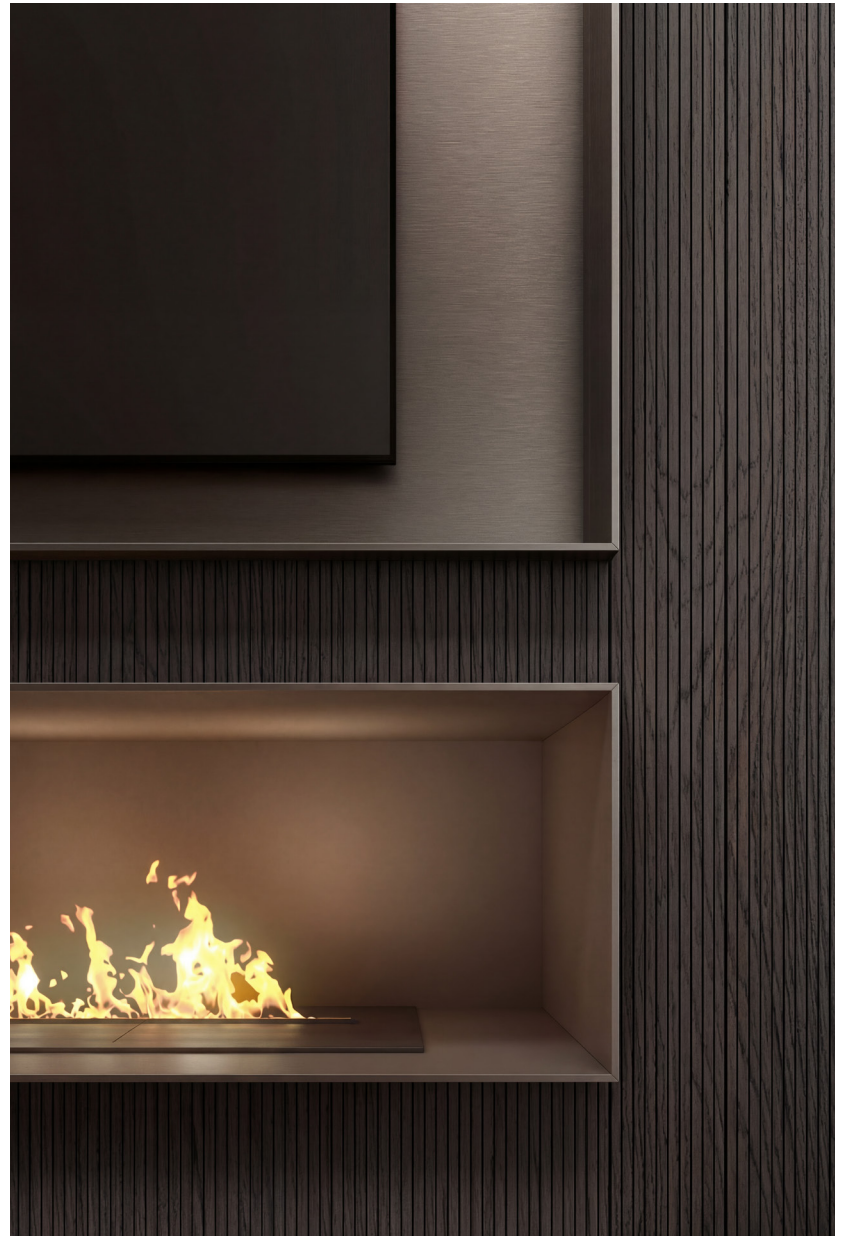


Doors, panels and decorative doors in Carbon Oak 10:2. TV box, niche, box bar in Bronze metallic lacquer. Aqua Bar sideboard in Amarone matt lacquer with Bronze metallic lacquered feet. Furniture: ESM Lobster Armchair Moretti Rectangular Carpet



  
LAVARA

Right Page: TV box, niche,  
box bar in Bronze metallic lacquer.  
Left Page: Detail of TV box, niche,  
box bar in Bronze metallic lacquer.  
Carpet: Moretti Rectangular.



Right Page: Detail of Bar  
Module in Bronze metallic lacquer.  
Left Page: Bar Block and Bar  
Module in Bronze metallic lacquer.



Cigar room in Grigio aged oak finishing with bar and open units in metallic brass lacquered finishing. Furniture: Harp Small Armchair, Blues Vitrine and Tramonte Carpet.



Wood Doors with Metal inlay.

## LUXURY LIVING MASTERFULLY CURATED



Pivot Wood Doors with Metal inlay  
Furniture: Anzio Cupboard, Quaranta Pouf and Ombre Mocha Carpet





Cube 6 + 1 side storage



Dress Code with transparent glass door  
and accessories in Wenge Oak. Blues Dining Chair.



LAVARA'S luxurious wall paneling transcends ordinary design—each piece is a singular work of art, meticulously crafted and exclusively tailored to your space alone. We celebrate true originality, blending bold creativity with unparalleled artistry to deliver one-of-a-kind solutions that distinguish your residence, yacht, or elite interior.

Rooted in Italian-inspired craftsmanship and our commitment to bespoke excellence, every panel becomes a bespoke statement: uniquely yours, dramatically distinctive, and forever sophisticated. No two visions are alike—and neither are our creations. Discover how LAVARA transforms walls into extraordinary expressions of personal style and timeless luxury.



Cube 6 in Lino matt lacquer. Panels and Movida shelves in Moka Oak.

# Light Tones



Rovere Light . Tammas Wave | Laccato Lino . Sahara . Artico | Metallico Bronzo

Dress Code and Cube 6 in Lino matt lacquered. Panels in Light Oak Tammas Wave.





Open Space Dress Code  
with kitchen module and hidden  
appliances on terminal. Panels  
in Light Oak Tammis Wave.



Dress Code Bar Module in Light Oak color with metal inserts in Champagne metallic lacquer.



Dress Code with doors in Light Oak 10:2 and Slim module in matt Lino lacquer. Leopard Carpet.



## Light Tones



Open Space Dress Code with Panels in Light Oak Tammas Wave. Furniture: Bloom Table, Blues Chair, Incanto Chandelier.

LUXURY LIVING  
MASTERFULLY CURATED



Cube 6 in Light Oak. Wood Paneling in Lino lacquer 10:10. Box in Champagne metallic lacquer.



Dress Code Sideboard below. Niche in Champagne metallic lacquer.





Open Space living room with TV area, kitchen module and integrated door and shelves in Light Oak.

LUXURY LIVING  
MASTERFULLY CURATED

## LUXURY LIVING MASTERFULLY CURATED

Here's why clients choose LAVARA for their most prestigious interiors:

### Bespoke Craftsmanship

Each panel is custom-designed and handcrafted with premium finishes, textures, and materials, delivering one-of-a-kind statements that exude exclusivity.

### Unmatched Quality

Rooted in Italian heritage and uncompromising standards, our panel offering features superior durability, refined detailing, and luxurious tactile appeal that stand the test of time.

### Exclusive Design Expertise

At our premier West Palm Beach atelier, our multidisciplinary team of interior architects, designers, and stylists collaborates closely with you, providing personalized consultations, detailed 3D renderings, material samples, and visionary concepts.

### Seamless Turnkey Service

From initial inspiration through precise installation, we handle every aspect with white-glove precision—ensuring a stress-free experience and impeccable results.

### Elevated Spaces

Whether accentuating residential villas, private yachts, high-end offices, or elite residences, our wall paneling solutions create dramatic focal points that infuse warmth, depth, and unparalleled luxury.





LAVARA

## ON SITE WALK THROUGH

We meet you on site to go through your project and discuss your vision.

## DESIGN PLANNING AND SCOPE

We determine the scope of work, the timelines and the project's design fees.

## CLIENT ON BOARDING

Once the proposal and the scope have been executed, we will send our design **agreement**.

## DESIGN PHASE

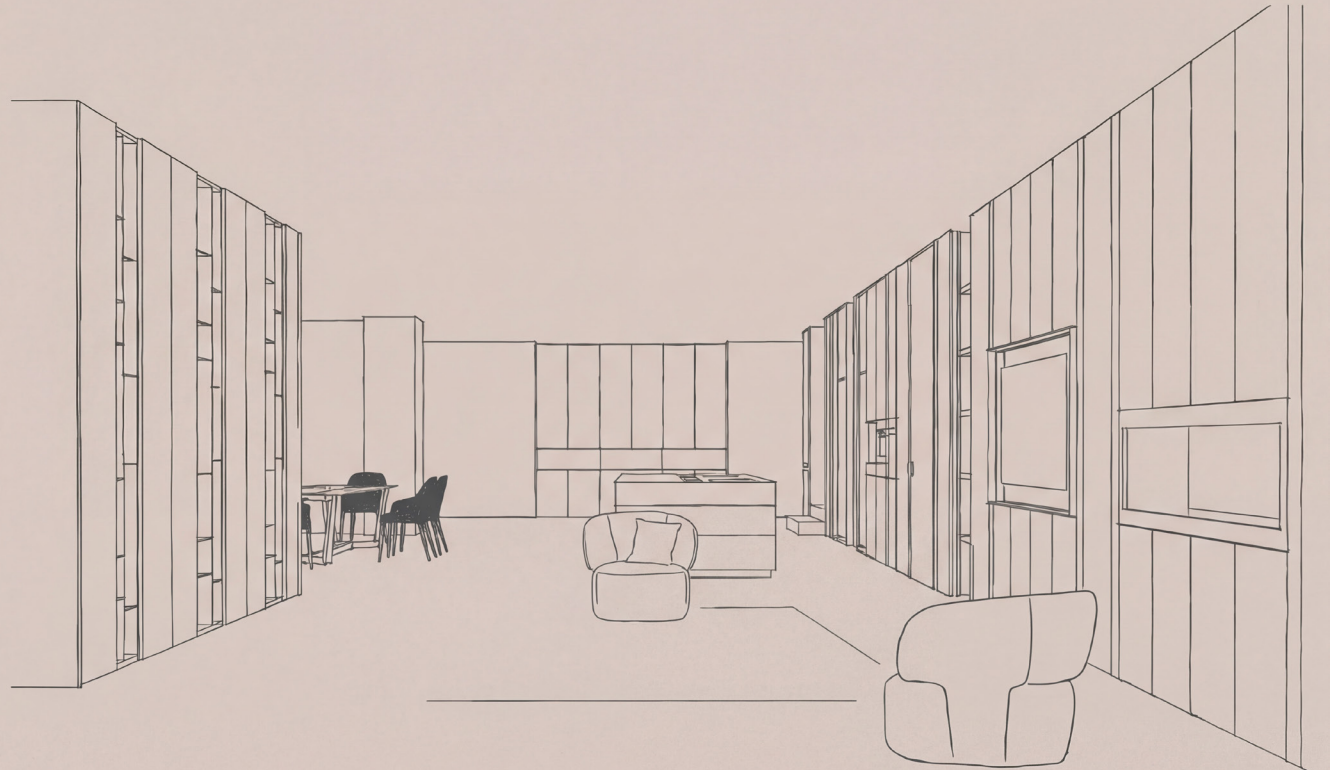
We begin the design phase providing you layouts, mood board **and realistic HD renderings**.

## MANUFACTURING PHASE

We take you from concept, to detailed design, to purchase and installation.

## PROJECT SIGN-OFF

We pay attention to meticulous quality control to ensure that every aspect of the project is met.





CUSTOM ITALIAN WOODWORKING  
Wall Paneling

Rovere Dark. Tammis Wave Wengè Oak | Metallico Bronzo | Pietra Grey



Image on the Left: Corridor with Dress Code in Dark Brown lacquered finishing with brass metal inlay.

Image bottom Left: Detail of corner closure side.

Carpet: Mystica

Image Bottom Right:

MATERIALS:

1. Brown panel with Brass Metal Inlay
2. Brass
3. Clear Glass
4. Royal Dark Wood color panel





Image on the Left: Corner Dress Code composition with integrated doors. In detail, metallic lacquered box and Plissé near inserts and door's handle.

Image bottom Left: Detail of metal insert for artwork display.

Image Bottom Right:

**MATERIALS:**

1. Lacquered grooved panel
2. Wenge Dark Oak Panel
3. Brass
4. Vintage Sand Leather





Image on the Left: Corner Dress Code composition with bar module and integrated doors. In detail, open module with gres back panel and vertical led lighting.

Image Bottom Right:

- MATERIALS:**
1. Rovere Moka 10:2
  2. Brass
  3. Noir Desir Marble
  4. Clear Glass





Image on the Left: Dress Code composition with integrated doors and shelf th.12 cm. In detail, the "custom cut" on the door.

Image bottom Left: Door detail.

Image Bottom Right:

- MATERIALS:**
1. Lacquered panel 10:10
  2. Rovere Fumo Panel
  3. Pietra Grey
  4. Vintage Sand Leather

CARPET: Siena Brown

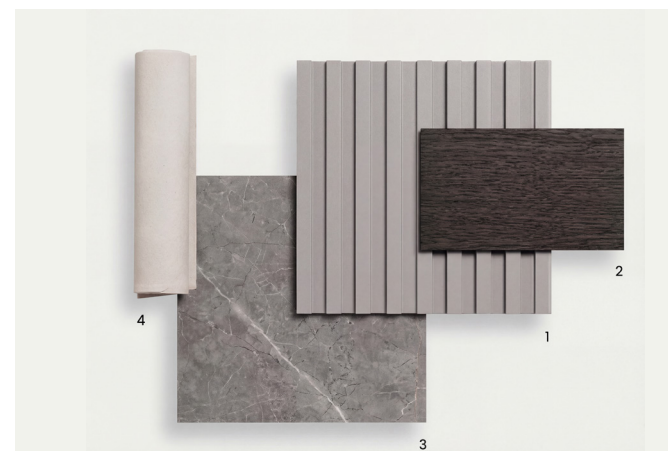




Image on the Left: Dress Composition with central door passage with folding doors. In detail, the Wood handle.

Image bottom Left: Detail of cupboard and handles.

CARPET: Puro Gold  
Bow Poufs

Image Bottom Right:

MATERIALS:  
1. Canapa Line  
2. Rovere Visone  
3. Royal Dark Wood color panel





Image on the Left: Dress Code living composition with TV module and open module with vapor chimney.

Image bottom Left: Detail of Oceano Wall Panel - Plissé

CARPET: Puro Creme

Image Bottom Right:

MATERIALS:

1. Oceano Plissé Wall Panel
2. Bronze Metal
3. Rovere Visone
4. Clear Glass





LAVARA



Image on the Left: Dress Code composition with lacquered integrated doors.

Image bottom Left: Detail of door

Carpet: Eclisse

Image Bottom Right:

- MATERIALS:
1. Vischio 10:10
  2. Bronze Metal
  3. Alpha
  4. Wool Material





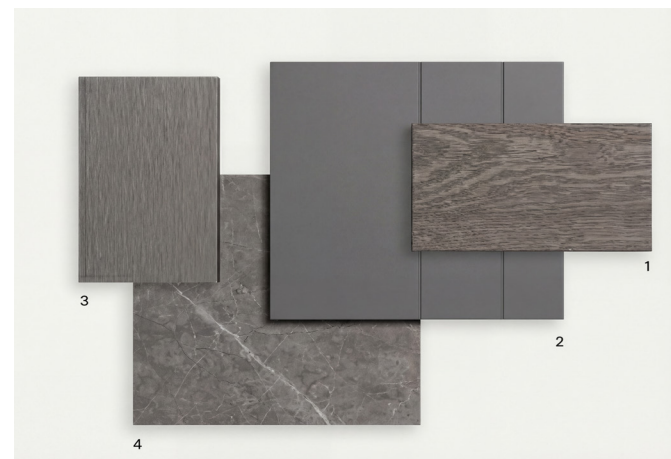
Image on the Left: Dress Code composition with Cube 6 unit.

Image bottom Left: Vertical LED lighting on the lateral side,

Carpet: Linea

Image Bottom Right:

- MATERIALS:
1. Rovere Cenere
  2. Graphite Line Paneling
  3. Bronze Metal
  4. Pietra Grey





Dress Code in Graphite matt lacquered with 10:10 engravings with metallic brass lacquered TV and bar units. Furniture: Blues sofa, Blues Rectangular Coffee Table, Blues Side Tables and Marisol Carpet.

LUXURY LIVING  
MASTERFULLY CURATED



Dress Code composition in Tabacco aged oak finishing, with metallic brass lacquered box. In detail, on the right hand side, the door in Tabacco aged oak finishing and internal structure in Tabacco open pore oak with rear horizontal led lighting. On the left hand side, metallic brass lacquered boxes. Bar unit with natural transparent glass doors and brass lacquered frame.

LUXURY LIVING  
MASTERFULLY CURATED

On the left paneled wall is the Dress Code wardrobe with Fumo aged oak doors and lacquered Brass Prestige central sides. In detail, on the left hand side, the built-in Gap B1 handle in oak finishing.

LUXURY LIVING  
MASTERFULLY CURATED







CUSTOM ITALIAN WOODWORKING  
Dressing Room & Wardrobe Solutions





LAVARA

Glass Framed closet with metal structures in Royal finishing and natural transparent glass doors. On the right hand side of the closet, there is a pull-out trousers holder in brown finishing. Complete closet customized and bespoke according to clients requirements.

LUXURY LIVING  
MASTERFULLY CURATED



Isle Icon in Grigio aged oak with electronic velvet accessory for watches and jewelry.





GLASS wardrobe with Light oak structure and Bronze glass doors with metallic lacquered Champagne frame. Kab walk-in closet with back panels upholstered in Canvas Luna fabric, internal accessories in Light oak and metallic items in Champagne. Central ICON Island in Light oak.

LUXURY LIVING  
MASTERFULLY CURATED



Dress code wardrobe with Canapa matt lacquered doors and built-in Gap B5 handles. Structures and open units in Royal finishing. Isle Cube in Royal with Canapa matt lacquered and Cuoio Moro grid.



Dress Code wardrobe with prestige Champagne sides, Fumo oak structure and matt Nocciola lacquered drawers. On the right Kab walk-in wardrobe with back panels in Canvas Luna fabric.

LUXURY LIVING  
MASTERFULLY CURATED



Inclined shoe-holder shelf.



Inclined shoe-holder shelf.



Shirt-holder unit with fronts in Champagne lacquered finishing.



Hanging tray with internal accessory grid and trousers-holder below.





CUSTOM ITALIAN WOODWORKING  
Bedroom Solutions

Wardrobe STYLE with swing door  
in Oceano 10:10 lacquer finish

DRESS CODE bed with upholstered headboard in Canvas Luna and horizontal Champagne lacquered niche. AQUA bed group in Lino 10:10 lacquer with Champagne base.



DRESS CODE bed with upholstered headboard in Canvas Topo and upper boiserie in Gray oak 10:2.



DRESS CODE night stands are made in Gray Oak with Champagne structure.





Furniture: Corsocomo armchair  
Alassio night table

LUXURY LIVING  
**MASTERFULLY CURATED**

Panels in matt Canapa with central accent panels wallpapered. Furniture: Blues King Size Bed, Roma Side Table in brushed gold, Roma Bedside Table and Orbis Carpet.





CUSTOM ITALIAN WOODWORKING  
Kitchen Solutions



Tall units CX 12  
in matt lacquered  
panna P00 with  
flat groove. Open  
tall units in cenere  
oak ER3 wood.



LAVARA

## LUXURY LIVING MASTERFULLY CURATED

### LAVARA BRINGS BESPOKE KITCHENS TO FLORIDA

For over four decades, our esteemed Italian partners have defined the pinnacle of kitchen design through an unwavering commitment to high-design excellence and bold, avant-garde innovation. Through continuous research, experimentation, and a passion for pushing boundaries, they pioneer new frontiers in functionality, aesthetics, and technology—crafting kitchens that are as intelligent and intuitive as they are breathtakingly beautiful.

This is a masterful dialogue between cutting-edge materials and intelligent functions: the perfect harmony of refined elegance, minimalist purity, and technical sophistication.

#### Clean, linear design.

Fully modular and entirely customizable elements create exclusive, highly functional living spaces—where advanced technology seamlessly enhances everyday life without ever dominating the experience. The kitchen becomes the true heart and soul of the home: a creative expression of your personality, thoughtfully crafted to inspire, reflect your individuality, and elevate daily rituals.

At LAVARA, we select our manufacturing partners with the utmost care and precision. We collaborate only with those who deliver the absolute premium timeless Italian craftsmanship fused with the most innovative, forward-thinking designs available today. Only the exceptional reaches our clientele.

Modular.

Transversal.

Extraordinary.

Perfect Kitchen designs.

Island hob base unit CX 12 in stainless steel satin IX0 finish with cenere groove. Worktop, back and side panel island in stainless steel satin IX0 finish. Suspended worktop in stainless steel satin IX0 finish. Island base units CX 12 in matt lacquered nero O09 with flat groove. Sink, side and back panels in stoneware C08 Negro Natural Storm C08. Tall and base units CX 12 in Fenix verde comodoro FM5. Worktop and portal in stoneware C08 Negro Natural Storm C08.





LAVARA

LUXURY LIVING  
MASTERFULLY CURATED

### EXCLUSIVE KITCHEN COLLECTIONS:

Four Distinct Systems - A perfect fusion of refined aesthetics, minimalist design, and intelligent functionality.

#### CX SYSTEM

Essential, modern, endlessly versatile. Four models with multiple opening options (handle, recessed, flat groove) and over 75 finishes. Create kitchens that are uniquely yours—adaptable to every style and space.

#### CX FRAME SYSTEM

Tradition meets innovation. Sophisticated aluminium-framed doors combine premium materials like ceramics and glass for seamless elegance. Two models with recessed or flat groove openings. Strength, durability, timeless refinement.

#### CX ALUMINA

Where heritage meets the future. Natural wood meets advanced aluminium technology. Aluminum honeycomb or canneté wood fronts with handle or recessed groove openings. Defined lines. Architectural presence. Contemporary character.

#### CX VIDRO

Lightness redefined. Striking black chrome aluminum frames paired with smoky grey tempered glass doors. Hidden hinges for uninterrupted linearity. Bright, elegant, modern—with powerful visual impact.

Modular. Transversal. Extraordinary. Perfect  
Kitchen designs.



Island CX 10 ultramat talpa EM1 with black M02 handle. Worktop, sides and island back panel in stoneware Kelya Natural C09. Worktop and side panels in stoneware Blanco Plus Abujardado Pacific C03. Suspended base units and tall units CX 10 in heat treated oak EE1 wood with black M02 handle.

LUXURY LIVING  
MASTERFULLY CURATED



Tall units with a protruding front elegantly interrupt the overall volume, while integrated lighting turns the resulting niche into a distinctive, glowing focal point. A simple yet striking detail that adds depth, character, and modern sophistication.

LUXURY LIVING  
MASTERFULLY CURATED





Island base units CX 11 in Fenix beige arizona FM1 with curved groove. Worktop, side and back panels island in stoneware Gris Natural Senda C07. Snack top and shelves in heat treated oak EE1 wood. Tall units CX 11 in heat treated oak EE1 wood with curved groove in matt lacquered nero 009.

LUXURY LIVING  
MASTERFULLY CURATED



Perfect for living areas adjacent to the kitchen, these units stand out for their superior quality, refined elegance, and extensive choice of finishes. Shelves can cover entire walls, pair seamlessly with back panels, or elegantly enhance the back of a kitchen island.



LUXURY LIVING  
MASTERFULLY CURATED





Base and tall units CX 11 in melamine perla MR0 with black curved groove. Island base units CX 11 in heat treated oak EE1 wood with black curved groove. Back panels, side panels and worktop in stoneware Gris Abujardado Geo C05.

LUXURY LIVING  
MASTERFULLY CURATED

LUXURY LIVING  
MASTERFULLY CURATED



Pure, rigorous composition where functionality meets refined aesthetics.  
A perfect synthesis of order and style, designed to maximize every inch of  
drawer and basket capacity with effortless elegance.





Base and tall units CX 11 in carbon oak ER2 wood with black curved groove. Back panels, side panels and worktop in stoneware Moka Abujardado Jasper C04. Vidro tall units CX 19 with black aluminum frame and smoked glass with fabric effect.

LUXURY LIVING  
MASTERFULLY CURATED



## LUXURY LIVING MASTERFULLY CURATED



The expressive beauty of stoneware is elevated by the integrated sink. Its subtle lateral inclination ensures perfect water drainage, eliminates joints on the base for a seamless, hygienic surface, and creates a distinctive look with the cleverly offset drain. Pure elegance, intelligent functionality, unmistakable character.



Maximum aesthetic cleanliness is combined in perfect harmony with unparalleled practicality: the doors, characterized by a 30° contoured profile, are designed for easy grip and handle-less opening



Island hob base unit CX 12 in stainless steel satin IX0 finish with cenere groove. Worktop, back and side panel island in stainless steel satin IX0 finish. Suspended worktop in stainless steel satin IX0 finish. Island base units CX 12 in matt lacquered nero O09 with flat groove. Sink, side and back panels in stoneware C08 Negro Natural Storm C08. Tall and base units CX 12 in Fenix verde comodoro FM5. Worktop and portal in stoneware C08 Negro Natural Storm C08.

LUXURY LIVING  
MASTERFULLY CURATED



LUXURY LIVING  
MASTERFULLY CURATED



Stainless steel is a durable, ductile, and highly hygienic material, making it the ideal choice for kitchen environments where performance and longevity are essential. The stainless steel-covered door is crafted using exclusive technologies, driven above all by real-world demands for superior functionality, practicality, and lasting performance.





Base units and island base units CX 12 in matt lacquered panna 000 with flat groove. Back panels, side panels and worktop in natural stone bianco Carrara P00. Tall units CX 12 in matt lacquered panna 000 with flat groove. Open tall units in cenere oak ER3 wood.

LUXURY LIVING  
MASTERFULLY CURATED



The open units are characterized by a 22 mm thick structure that guarantees solidity. Back panels can be customized not only with different finishes of the same material but also with other materials such as stoneware.





Base units CX 11 Canaletto walnut EE0 wood with matt lacquered anthracite O08 curved groove. Worktop in stoneware Gris Abujardado Totem C11. Wall units CX 11 in Canaletto walnut EE0 wood with matt lacquered anthracite O08 curved groove. Vidro tall units CX 19 with black frame and smoked glass. Wall units CX 14 with black frame and etched anthracite VA8 glass. Back panel and shelves Canaletto walnut EE0 wood.

LUXURY LIVING  
MASTERFULLY CURATED

Right Page, Bottom Image - The display units create a balanced, harmonious look while making the overall design feel lighter and more open. With built-in LED lighting, they gently illuminate the items inside, giving them a beautiful "spotlight" effect and turning everyday objects into elegant focal points.





Base units CX 15 with black frame and stoneware Laurent Natural C18 with black aluminum flat groove. Worktop and back panel in stoneware Laurent Natural C18. Snack top in matt lacquered corda O04 with black metal Supernova support. Wall and tall units CX 15 with black frame and matt lacquered corda O04. Tall units CX 15 with black frame and anodized metal lacquered bronzo scuro LA1 with flat groove.



LUXURY LIVING  
MASTERFULLY CURATED



Worktop and back panel in stoneware Laurent Natural C18. Snack top in matt lacquered corda O04 with black metal Supernova support.



Island base units CX 16 in metal titanio T01 with black M03 handle. Worktop, back and side panels island in stainless steel mat IX1 finish. Base units CX 18 in metal titanio T01 with black flat groove. Worktop in stoneware Aura Natural C01. Tall units CX 16 in metal titanio T01 with black M03 handle.

LUXURY LIVING  
MASTERFULLY CURATED



LAVARA



Stainless steel, unalterable and resistant to water and fire, change the aesthetics of the kitchen and greatly increases its performance.





Base units CX 18 metal brown T02 with black curved groove. Worktop in stoneware Lunar Industrial C16. Tall units CX 18 in heat treated oak EC1 cannetè wood with black curved groove. Wall units CX 18 heat treated oak EC1 cannetè wood. Back panels in stoneware Sirius Solid C10. Snack top in heat treated oak EE1 wood with black Supernova support.

LUXURY LIVING  
MASTERFULLY CURATED



LUXURY LIVING  
MASTERFULLY CURATED

## WHERE FUNCTION, BEAUTY, AND TECH CONVERGE

---

At LAVARA, we are proud to partner with Italy's most renowned leaders in innovative kitchen design to deliver truly unique and fully customized kitchen solutions.

This collaboration unites our shared passion for functionality, aesthetics, and cutting-edge technology—the guiding principles behind our partners' continuous research, experimentation, and relentless pursuit of excellence.

By deeply understanding evolving lifestyles and needs, and channeling bold innovation and creativity, we co-create kitchens that adapt seamlessly to modern living. In response to recent transformations in how we design and experience kitchen spaces, we introduce advanced features, innovative materials, and multifunctional elements that elevate everyday rituals into extraordinary moments.

Innovation is the direct expression of changing demands: embracing change drives progress, and progress elevates quality of life. Through constant dialogue between sophisticated materials and intelligent functions, we achieve the perfect balance of beauty, simplicity, and technology.

Leveraging state-of-the-art technologies and dedicated R&D expertise from our esteemed Italian partners, our collaborative efforts create flexible, forward-thinking environments tailored precisely to individual preferences. Every project reflects a distinctive Italian identity while offering maximum personalization—in composition, materials, finishes, and details—shaping spaces that are crafted exclusively to our clients' vision and consistently exceed conventional standards.

Ready to transform your home with a state-of-the-art kitchen that blends masterful Italian craftsmanship, innovative technology, and perfect personalization?

Contact LAVARA today and let us bring your dream kitchen to life.



**Disclaimer**

LAVARA, based in West Palm Beach, Florida, is a premier retail and online supplier of bespoke Italian furniture and interiors. All information presented in our source book is provided by LAVARA's trusted partners and is accurate to the best of our knowledge at the time of publication. However, LAVARA cannot be held accountable for any inaccuracies, discrepancies, or changes in the information provided, as these are subject to variations beyond our control. LAVARA reserves all rights to modify, update, or discontinue products and specifications without prior notice.

## CONTACT US

---

### Phone

+1 949 528 2729

---

### E-mail

warren@lavaraworld.com

nicole@lavaraworld.com

---

### Website & Social

www.lavaraworld.com

@lavarworld

---

### Physical Store Address

508 Okeechobee Blvd,  
West Palm Beach, Florida, 33401

---



LAVARA

www.lavaraworld.com